

Highland PARK



LOUISVILLE, KY.

REPORTER

VOLUME IV
ISSUE XII

DECEMBER, 1983

BUDGET RENT-A-CAR



New building.

On Friday, December 16, at 2 pm. Highland Park residents are invited to visit the new Budget Rent-a-Car facility on Crittenden Drive.

This new facility, which has been in the planning for one year, combines Budget's total operation into one attractive new building. The operation was formerly housed in two locations--one on the east side of Crittenden Drive (which will be lost to the I264 expansion) and one on the west side, the site of the new two-story facility.

The new building has approximately 6600 square feet, more than double its previous combined space. It includes 7 private offices, and a large, subdivided office which houses the accounting and computer departments. There is also a large meeting/conference room.

The customer service and waiting area is large and pleasantly decorated, with seating for waiting customers. The operation system has been revised and gas pump operation computerized. A large canopy has been installed over the pump area, to provide protection against bad weather.

Approximately 25-30 customers are assisted each day, with another 20-25 truck rentals.

Mr. John Huber, one of the owners, says the building was built so that it can house the business as it grows.



Check-out counter at Budget Rent-A-Car.

With the expansion of the Watterson Expressway and the relocation of the airport's car rental agencies, Budget's building program is only partially complete. The airport area is being cleared and Budget's contractor hopes to begin building their airport rental facility sometime this month.

The Neighborhood Association is very pleased to have Budget located in the area. The new building adds greatly to the appearance of the Crittenden Drive area. The willingness of Budget's management, John and Ken Huber and Bill Rouch, to work with the Association to save housing, as well as improve the neighborhood is greatly appreciated. The house on Wawa, owned by Mr. Huber, is presently being rented.

We urge residents, especially those living in the vicinity of the new Budget Facility to take advantage of this opportunity to view the interior of the new building, and ask any questions you may have about the operation. Mark your calendar for Friday, December 16, at 2 pm.



Library News

During the month of November, a Fall Leaf contest was conducted at the Highland Park Branch of the Louisville Free Public Library. Each child placed his or her name on a leaf which contained a number. At the end of the month a number was selected. The winning number was signed by Tony Doyle. Tony received a baseball and a Garfield book marker, his favorite.

Mrs. Claudia Beck, the librarian, would like to express her thanks to Meredith Rivman, who took the time to draw and cut out all the leaves.

The current theme at the library is Christmas. All children can sign the Advent Calendar and at the end of the month a lucky number will be drawn. Also each child can decorate a paper bell to be hung in the library. The Christmas tree behind Tony in the picture was decorated by Darla Lamdin.

The library will be closed December 24 - 26 for Christmas and December 31 - January 2 for New Year's. The bookdrop will be open for returning books on these days.



Tony Doyle with his prize.

THANKS

This year the Highland Park Neighborhood Association was able to help five families with food for their Thanksgiving dinners. The families, which were referred to the Association by the South Louisville Community Ministries, received baskets which included turkeys, canned goods, milk, bread, and pumpkin pies.

We would like to thank the stores which donated item or allowed us to place donation jars on their counters:

Winn-Dixie Stores, Inc. donated a gift certificate which was used to purchase canned goods. Thanks to Mr. Mel Kline in their advertising Dept. for his assistance.

Convenient Food Mart at 4462 Park Blvd. donated an assortment of canned items and placed a donation jar on their check-out lane.

Brown's Market at 4518 Park Blvd. placed a donation jar on their counter.

Also helping, was Kay's Restaurant at 4500 Park Blvd. Kay placed a donation jar on her counter.

Delicious pumpkin pies were donated by Patterson's Bakery located at 4477 Park Blvd. They provided a very tasty ending to these dinners.

Thanks also goes to the individuals who donated items to complete the list the donations did not fill.



Highland Park REPORTER

INFORMATION OFFICE:

4447 Park Boulevard
Louisville, Kentucky 40209

366-6316

DECEMBER, 1983

VOLUME IV

ISSUE XII

EDITOR: NANCY PRICE

REPORTERS: NANCY PRICE
SHERRY JOHNSON
PAT RANDOLPH

PUBLISHED WITH FUNDS FROM THE CITY OF
LOUISVILLE COMMUNITY DEVELOPMENT CABINET.

Donations Needed!!

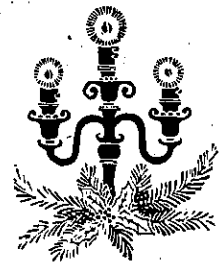
In another article you read that Thanksgiving Baskets we distributed to five needy families in Highland Park.

The Highland Park Neighborhood Association will also be distributing five Christmas Baskets to families. We would like to do more, but we need your help in order to do so.

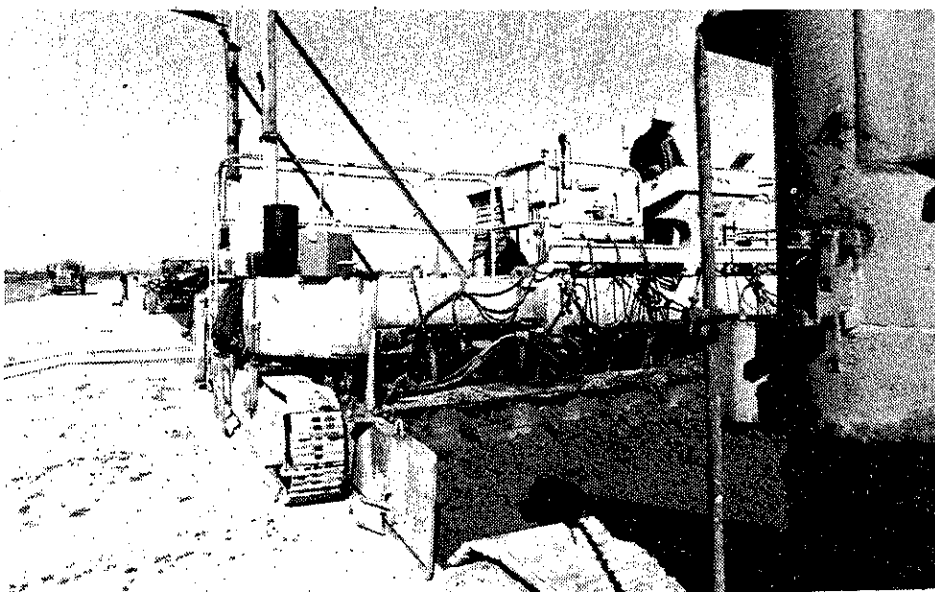
Last year, due to the generosity of the residents of Highland Park, donations were made for six additional baskets. Can you find it in your heart to be generous this year.

Times are hard, but if everyone could donate a little money toward the purchase of a turkey and one can good, many more families could be helped.

If you think you can help, stop by the office and see Pat or Sherry or call them at 366-6316 and let them know. With a little help, Highland Park can be a little happier this Christmas Season.



Airport News



Giant paving equipment spreads cement over a 25-foot-wide section as part of the project extending the north/south runway at Standiford Field. Paving is nearly completed; and the lengthened runway will reopen to traffic on December 14, one day ahead of schedule.

The last of the paving is being done in connection with the north/south runway extension at Standiford Field. The \$6 million project is two-thirds funded by the Regional Airport Authority.

With full operation of the north/south runway, aircraft operating at Standiford Field will return to normal, significantly decreasing traffic over Highland Park and other neighborhoods west of Standiford Field.

The project has involved filling and grading of land, 14 inches of paving of a 2200' X 150' stretch of runway, and paving of a 2200' X 75' taxiway.

The new 10,000-foot runway will be the longest at any non-military airport in Kentucky and will:

*Improve safety and the operational capability of the Kentucky Air National Guard.

*Permit nonstop, long haul flights under adverse weather conditions.

*Help abate airport noise since aircraft will be higher as they depart Standiford Field.



Sympathy

The Highland Park Neighborhood Association wishes to express its deepest sympathy to the family and friends of the residents of Highland Park who have recently died:

Albert Cox, 65, of 4623 Louisville Ave., died November 8.

He was a native of Wallins Creek, a retired Army sergeant and a veteran of World War II.

Survivors include his mother, Pearlee Cox; four sisters, Ethel Blackburn, Ruby Pease, Nadine Herl and Christine Schank; and a brother, William Cox.

James Holland, 76, of 4612 Park Boulevard, died November 13.

He was a native of Missouri and a retired employee of Kentucky Manufacturing Co.

Survivors include his wife, the former Violetta Stovall; two daughters, Mrs. Carolyn Nemeth and Mrs. Rebecca Logsdon; five sons, Everette, Marvin R., James V., William, and Archie D.; a brother, George E. Holland; a stepsister, Mrs. Elsie Gafford; 24 grandchildren; and 7 great-grandchildren.

Monthly Meeting

The monthly meeting of the Highland Park Neighborhood Association will be held, Monday, December 12, 1983 at the Highland Park Information Center at 4447 Park Boulevard at 7:00 P.M.

If you have anything to discuss, call Sherry or Pat at 366-6316 prior to the meeting to have it placed on the Agenda.

Classified

FOR SALE: Custom built kitchen cabinets. Half Price of major companies. Also, cut and seasoned hard wood for sale. Call 366-8058. Thomas Skaggs.

Don't Burn

Every Christmas season, thousands of homes burn because people are not aware of some of the precautions that should be observed while decorating their homes. Here are some thoughts for the holiday season:

- * Don't leave your children alone for a minute or you will invite accidents at Christmas time.
- * Plug-in electric toys should be labeled for fire safety by a testing agency.
- * Do not buy highly combustible toys or ones that use flammable liquids.
- * Do not buy a tree with shedding needles.
- * Cut off one inch from the trunk and keep the tree in a non-tip stand away from doors and sources of heat.
- * Plastic trees should have a fire-retardant label.
- * Lighting sets must be labeled by a safety-testing agency. Replace worn sets.
- * Do not overload outlets. Protect wires from injury.
- * Don't hang lights on a metallic tree.
- * Outdoors, use special outdoor lighting.
- * Unplug the lighting before you go to bed or leave the house. Do not smoke near the tree or decorations. Have large ashtrays, and store matches above the reach of children.

This holiday season, learn not to burn. If you should have any questions about decorating, call the local fire prevention Bureau and ask to speak with your area inspector.



NEW MEMBERS

During the month of November the Highland Park Neighborhood Association acquired several new members:

Servix Construction Co.
Roger Shofner
Thomas & Kathy Skaggs

Beginning September 1, your membership will be effective for one year from the month in which you joined. For the members whose membership expires the month of December and all residents contemplating joining, remember we need your support in order to continue to service you.

Remember, your \$5.00 membership dues also entitles you to the use of the tools in the Tool Library.

Why don't you stop by the Highland Park Information Center at 4447 Park Boulevard and talk to Sherry or Pat today about becoming a member of the Highland Park Neighborhood Association.

MERRY CHRISTMAS

Help With Utilities

During the Winter months, many people will find it difficult to keep up the payments on their heating and utility bills. There are several channels for help. The following is some of them:

FUEL ASSISTANCE

If you need help paying your heating bill, contact:

Kentucky Department for Social Insurance
Home Energy Assistance Program (HEAP)
600 West Cedar 588-4238
908 West Broadway

Take With You: Your last heating bill
Social Security # of everyone in the house
Proof of income.

Senior citizens and handicapped persons may apply December 5-16. If you are elderly or disabled, you may send someone to apply for assistance for you.

All other applications will be taken beginning January 2, 1984.

You may also apply for assistance through Winterhelp in February:

Crisis & Information Center 589-4313

American Red Cross 589-4450
510 East Chestnut Street

Southwest Resource Center 935-0310
9070 Dixie Highway

Do you have no heat and little or no income? Call for heaters or fuel:

Crisis Intervention Program 634-0747

Do you have little income and need insulation for your home? Call:

CAA - Energy & Weatherization Program 584-8133

Project WARM 635-7928

OVERDUE UTILITY BILLS

Is your service going to be shut off because of an overdue bill? Call:

ACCEPT 583-3626
333 Guthrie

Consumer Protection Office 581-6280
527 W. Jefferson St., Room 106.

CERTIFICATE OF NEED

If you have a cut-off notice (brown bill) dated December 1 to March 31 and are trying to keep you gas and lights from being turned off, you can apply for a Certificate of Need. They cannot be turned off if this certificate of presented for 30 days.

Contact:

Department for Social Insurance
600 West Cedar 588-4238
706 West Muhammed Ali Blvd. 588-4200
908 West Broadway 588-4203 or 588-4410

Eligibility Guidelines for Certificate of Need:

Family Size	Monthly Income	Yearly Income
1	\$500	\$6,000
2	600	7,200
3	700	8,400
4 or more	800	9,600

If you are not eligible for the Certificate of Need, then see a doctor, nurse or other health officer to find out if you are eligible for a "Medical Certificate." Present this to the utility company. They cannot disconnect service for 30 days.

If none of the above information can help you, call the Crisis and Information Center at 589-4313, and they will put you in touch with what help is available.

Be Wise About Reye's

The flu and various symptoms identified as flu occur more frequently during the winter months. Flu is a viral infection, and as such warrants our special attention because a fatal disease of children is associated with it. The Disease known as Reye's Syndrome, affects children from infancy to adolescence and can develop 3 to 5 days after the Chickenpox, an upper respiratory infection or other viral infections. It affects the liver and brain, is non-contagious and is often misdiagnosed as other ailments.

After a viral infection has seemingly run its course and the child is feeling better the following symptoms should be treated as serious and as possibly the first indication of Reye's Syndrome. Anti-nausea medication may mask the symptoms of the disease and because of the possible association of aspirin with Reye's Syndrome, parents should consult their physician before using these drugs. Watch for these symptoms usually occurring in this order:

1. PERSISTANT OR CONTINUOUS VOMITING.
2. LISTLESSNESS (LOSS OF PEP AND ENERGY, DROWSINESS).
3. PERSONALITY CHANGE (SUCH AS IRRITABILITY, COMBATIVENESS, OR SLURRED SPEECH).
4. DISORIENTATION (UNABLE TO IDENTIFY WHEREABOUTS, OR FAMILY MEMBERS).
5. DELIRIUM, CONVULSIONS.

A child's life can depend on EARLY diagnosis. Reye's Syndrome should be suspected in any child with Chickenpox who vomits repeatedly. Phone your physician immediately if these symptoms develop and tell him you suspect Reye's Syndrome. If your doctor is not available take your child to an emergency room promptly. Two liver tests can be done to determine the possibilities of Reye Syndrome. There is a 90% chance of recovery when the syndrome is treated in its earliest stages by physician and nurses experienced in the treatment of Reye's.

If you want further information, contact these agencies:

NATIONAL REYE'S SYNDROME FOUNDATION
North Central Kentucky Chapter
2519 Steeplechase Drive
Louisville, Kentucky 40299
Phone: (502) 267-7889

or

NATIONAL REYE'S SYNDROME FOUNDATION
P.O. Box 829 AB
Bryan, Ohio 43506
Phone: (419) 636-2679